



**RUGGED FUSION**  
**TOUGHBOOK S1**



## TOUGHBOOK S1

### THE STYLING YOU WANT WITH THE RELIABILITY YOU NEED

The Panasonic TOUGHBOOK S1 tablet the ultimate rugged Android™ tablet for the truly mobile Worker. This 7 inch screen device is easy to use in one hand, adaptable for a variety of tasks yet powerful and tough enough to cope with the busiest shift.

- Qualcomm® SDM660 Octa-Core Processor
- Android 11
- 7.0" WXGA(1280x800) with AR, IPS colour LCD (up to 500cd/m2 brightness)
- Gadget Port for flexibility
- Up to 14 hours battery life with extended battery
- Bluetooth™ Version 5.0 Class 1
- ARM® TrustZone® (Built-in) Security
- 5 MP Front camera, 13MP Rear camera with autofocus and LED flash
- Min. 150cm\*\*\* Drop Resistance
- -20 °C to 50 °C \*\*\* operating temperature

\*\*\* Tested by Panasonic

*All technical specifications are subject to change without notice.*

## TOUGHBOOK S1 ACCESSORY ECOSYSTEM



Panasonic COMPASS covers everything you need to deploy and manage your Panasonic rugged Android tablets and handhelds securely in your business, over their lifetime. Look out for the logo next to the software and services that fall under the COMPASS umbrella in this catalogue.

Visit [business.panasonic.co.uk/computer-product/COMPASS](https://business.panasonic.co.uk/computer-product/COMPASS) to find out more.

## POWER MANAGEMENT SOLUTIONS

### Slim Battery Pack

3200 mAh

Part No: FZ-VZSUT10U



### Extended Battery Pack

5580 mAh

Part No: FZ-VZSUT11U

Standard configuration



### 5-Bay Battery Charger

Part No: FZ-VCBT131\* D/E/3

\*3: Continental; E: UK; D: Swiss

Dimensions: 152 x 89 x 60 mm / 6.0 x 3.5 x 2.4"

Weight: 0.44 kg / 1.0 lb

AC adaptor included.



### AC Adaptor 5-Bay Cradle

Part no: CF-AA5713A\*

For use with 5-Bay Charging Cradle (FZ-VEH5T1AA\*) and 5-Bay Battery Charger (FZ-VCH5T1AA\*)



### 5V Auto Adaptor (10W)

For use with S1 vehicle dock only.

Dimensions: 88.9 x 38.1 x 19 mm / 3.5 x 1.5 x 0.75" (Body)

Weight: 0.9 kg / 1.98 lb

Part no: PCPE-LNDL122 (plug)

Part no: PCPE-LNDL133 (wire)



### AC Adaptor + USB cable

Can be used to power the S1 directly (via USB Type-C)

Part no: FZ-AAE184E1\*

\*G: Europe; E: UK



### USB C CHARGING CABLE

Only for use with PCPE-LNDL122 or PCPE-LINDL123 adaptors, in place of the supplied cable, for charging the S1 directly.

Dimensions: 300 x 90 x 50 mm / 11.8 x 3.5 x 2"

50g / 0.11lb

Part no: PCPE-LNDS1USBC



All technical specifications are subject to change without notice.



## CARRYING SOLUTIONS

### TOUGHBOOK S1 Hand Strap (rotatable)

Part no: **FZ-VSTS11U**



### TOUGHBOOK S1 Shoulder Case

Part no: **FZ-VNSS11U**

Not compatible with gadgets and extended battery



### TOUGHBOOK Shoulder Strap

To equip on the Handstrap

Part no: **CF-VNS331U**



## MOBILE PRINT SOLUTIONS

### PJ7 Series A4 Mobile Printers

Perfectly dimensioned for your briefcase or computer bag, PJ7 series of compact, direct thermal printers can also be easily mounted in your vehicle. Take it out on the road and make sure your clients and customers receive those all-important documents in an instant. Available with 300 dpi print resolution, and with USB, Bluetooth or Wi-Fi.

Part No.: **PCPE-BRPJ763**  
**PCPE-BRPJ773**

PJ763 A4 mobile printer, 300 dpi with USB & Bluetooth  
PJ773 A4 mobile printer, 300 dpi with USB, Wi-Fi and AirPrint



*All technical specifications are subject to change without notice.*

## CARRYING SOLUTIONS

### Mobility Bundle

Features:

- A quick release removable carry handle and ergonomic shoulder strap
- Allows access to all features, ports and cameras
- Compatible with desktop cradle

Dimensions: 25.4 x 762 x 9.5 mm  
(max strap length 1.4m)

Weight: 56g

Part no: **PCPE INFL1B1**



### Hand Strap

Dimensions: 0,16 x 0,3 x 0,001 m

Weight: 0,02kg

Part no: **PCPE-INFS1HS**



### Holster

Dimensions: 0,16 x 0,21 x 0,05 m

Weight: 0,02kg

Part no: **PCPE-INFS1HL**



*All technical specifications are subject to change without notice.*

## DOCKING SOLUTIONS

### TOUGHBOOK S1 Single Device Desktop Cradle

Part No: **FZ-VEH1L1AA\***

\*3: Continental; E: UK

**AC adaptor included.** (CF-AA5713A)

Dimensions: Approx. 80 mm x 215 mm x 78 mm

Weight: Approx. 440 g

USB Port: USB2.0 x 1 ports (micro USB type-B)

Operating Temperature: 0 °C - 40 °C



### TOUGHBOOK S1 5-Bay Desktop Cradle

Part Nos:

- **FZ-VEH5L1AA\*** Charge and 2 x LAN
- **FZ-VCH5L1AA\*** Charge only

\*3: Continental; E: UK; D: Swiss

**AC adaptor included.** (CF-AA5713A)

Dimensions: Approx. 400 mm x 215 mm x 78 mm

Weight: Approx. 1.5 kg

LAN Port: 2 ports (10Base-T / 100Base-TX / 1000Base-T)

Operating Temperature: 0 °C - 40 °C



### TOUGHBOOK S1 Vehicle Docks

Part Nos:

- PCPE-GJL1VM01 / PCPE-HAVS103 Non-Electronic
- PCPE-GJL1VM02 / PCPE-HAVS101 Power, USB, no RF
- PCPE-GJL1VM03 / PCPE-HAVS102 Power, USB, Dual RF

No power adaptor included. VESA 75mm and AMPS mounting patterns.



*All technical specifications are subject to change without notice.*

## PRODUCTIVITY SOLUTIONS

### Panasonic Passive Pe

Part No: CF-VNP025U



### Panasonic Stylus Tether

Quantity of 3.

Part No: FZ-VNTT11U



### Infocase Stylus Tether

Part No: PCPE-INFUVA2



### Panasonic Headset

Part No: FZ-WHPX111



## SECURITY & PROTECTION SOLUTIONS

### LCD Screen Cleaning Cloth

Part No: CF-VNC002U

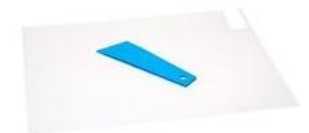
MOQ: 10 pcs



### Shatterproof Protective LCD Film

1 sheet

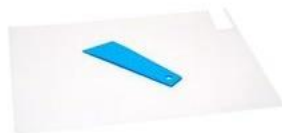
Part No: FZ-VPFS11U



### TOUGHMATE Privacy screen

1 sheet

Part No: PCPE-INFS1PF1



*All technical specifications are subject to change without notice.*



## PRODUCTIVITY SOLUTIONS

### Compact Wearable Barcode Scanner

Part Nos:

- PCPE-PGLSCN1 – Standard Range
- PCPE-PGLSCN2 – Mid Range



### Barcode Scanner Charging Cradle

With International plugs

Part No: **PCPE-PGLCHR3**



### Index Trigger Wrap - 3 Pcs. Pack

Part Nos:

- PCPE-PGLITSL - Left Hand, Size Small
- PCPE-PGLITML - Left Hand, Size Medium
- PCPE-PGLITLL - Left Hand, Size Large
- PCPE-PGLITSR - Right Hand, Size Small
- PCPE-PGLITMR - Right Hand, Size Medium
- PCPE-PGLITLR - Right Hand, Size Large



### Bluetooth Headset

Part No: PCPE-MODBTH1



### Headset Battery Charger – 10 bay

Part No: PCPE-MOD10BC



### Replaceable Batteries – 25 pack

Part No: PCPE-MODBAT1



All technical specifications are subject to change without notice.

## PROFESSIONAL SERVICES

### Android Installation

Part No: **PCPE-PSANDRD**

Price on Request

### SIM Installation

Part No: **PCPE-PSSIMIN**

### Information Management Bundle

IMEI, MAC, SIM, ASSET, Hardware Hash reporting.

Part No: **PCPE-PSATAGB**

### Customer Branding

Logo badge on device casing or bezel.

Part Nos: **PCPE-PSLOGOB**



### Custom ROM Creation

Price and SKU on Request. Depends on complexity.

### Asset Tagging

Standard, using CPE label set.

Part No: **PCPE-PSATAG1**

### Solution Packaging

Up to 10 items packaged together in a box.

Does not include custom designed case.

Part No: **PCPE-PSSPACK**

### Customised Deployment / Logistics

Part No: **PCPE-PSCDL01**

Price on Request.

*All technical specifications are subject to change without notice.*

## LIFECYCLE SUPPORT



### Compass Complete

A warranty bundle especially for TOUGHBOOK Android\* products:

COMPASS COMPLETE WARRANTY COVERAGE	Smart COMPASS Complete	COMPASS Complete
Manufacturer defects and functional failures	✓	✓
Comprehensive coverage for accidental breakage	✓	✓
Android Security Updates – 2 per quarter for 3 years after EOL	✓	✓
All materials parts and labour	✓	✓
96-hour turnaround time including logistics <sup>1</sup>	✓	✓
Rapid Replacement Service <sup>2</sup>	✓	✓
Multi-lingual helpdesk <sup>3</sup>	✓	✓
Online self-service warranty and repair portal	✓	✓
Battery failures (1 year)	✓	✓
Hardware diagnostics tool	✓	✓
APK Portal	✓	✓
Managed logistics	✓	✓
Repair by specialised Panasonic Repair Technicians	✓	✓
Real-time device, battery and application usage analytics	✓	
Access to real time analytics in operational dashboard	✓	

<sup>1</sup>Best effort endeavour with 90% success | <sup>2</sup>Available on request and subject to commercials | <sup>3</sup>Available 08.00 – 18.00 CET

need to take the warranty to access the Premium security updates

Part No.:

- FZ-YCZDCOMP2U COMPASS Complete 3 years for Tablets (A3, S1)
- FZ-YCZDCOMP4U COMPASS Complete 4 years for Tablets (A3, S1)
- FZ-YCZDCOMP6U COMPASS Complete 5 years for Tablets (A3, S1)
- FZ-YCZDCOMP8U Smart COMPASS Complete 3 years for Tablets (A3, S1)
- FZ-YCZDCOMPAU Smart COMPASS Complete 4 years for Tablets (A3, S1)
- FZ-YCZDCOMPUCU Smart COMPASS Complete 5 years for Tablets (A3, S1)

### Smart Battery Warranty



Smart Battery Monitor software, powered by B2M Solutions, monitors device battery health in real-time. Smart Battery Monitor will indicate when batteries reach low capacity during normal use, so a replacement battery can be sent out in advance. Available at point of sale of device only.

Part No.: CF-LESPBASS3/4/5 3/4/5 year Smart Battery Warranty

All technical specifications are subject to change without notice.

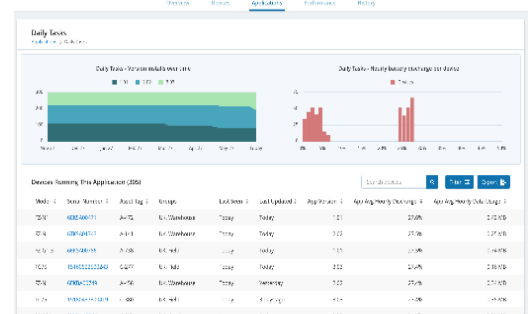


## SMART ESSENTIALS

### TOUGHBOOK Smart Essentials Bundle

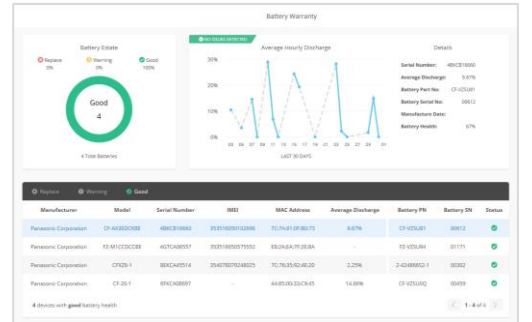
#### Smart Service

Real time analytics, powered by B2M Solutions, showing the health and performance of your estate of mobile devices, focussing on areas such as battery life, data usage, disruptions and connectivity. Enables the user to recognise patterns of usage and potentially pre-empt issues before they arise.



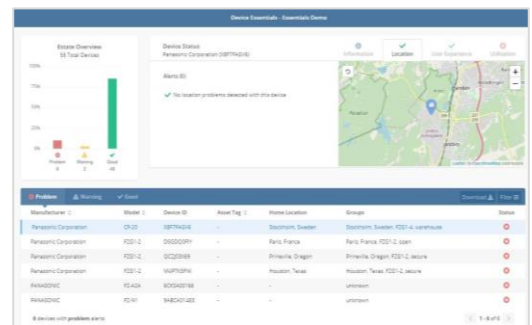
#### Smart Battery Monitor

An additional “Smart” module that monitors battery usage and health in detail, focusing on battery serial numbers, the software allows the customer to track, identify and replace batteries before they impact productivity. With dashboard access and alerts.



#### Smart Device Monitor

An additional “Smart” module that monitors device usage in more detail. Dashboard access provides information such as device location; user experience, including drop detection on Android devices and also enables alerts and geofences to be set up.



Part Nos:

- **CF-LESPSESS1** 1 year Smart Essentials Bundle
- **CF-LESPSESS3** 3 year Smart Essentials Bundle
- **CF-LESPSESS5** 5 year Smart Essentials Bundle

All technical specifications are subject to change without notice.

## SOFTWARE SOLUTIONS – PREMIER PARTNERS



### Absolute Data and Device Security

Patented technology to centrally secure TOUGHBOOK devices for unrivalled endpoint security and data risk management.

*Part numbers available upon request.*

Website: <https://www.absolute.com/partners/oem/panasonic/>



### NetMotion Mobility

More than just a VPN, "Mobility" Mobile Performance Management software can dynamically maintain access to applications through changing network conditions, allowing mobile workers to remain productive anywhere their work takes them. Diagnostics option also available.

*Part numbers available upon request.*

Website: <https://www.netmotionsoftware.com/products/mobility>



### SOTI MobiControl

MobiControl is an Enterprise Mobility Management (EMM) solution with enhanced EMM features like application management, content management, location services and remote help.

*Part numbers available upon request.*

Website: <https://www.soti.net/products/soti-mobicontrol/>



### Sygic

Sygic Professional GPS Navigation works offline and features truck specific routing, itinerary with time windows and over 60 APIs for development with Android and Windows based apps.

*Part numbers available upon request.*

Website: <https://www.sygic.com/enterprise/professional-gps-navigation-sdk>

For more info on these software solutions, please refer to the co-branded data sheet [here](#).



## SOFTWARE SOLUTIONS – CERTIFIED PARTNERS



### StayLinked

StayLinked's SmartTE software provides a cost-effective way to take advantage of touchscreen devices with Terminal Emulation by transforming traditional "green screen" application screens into easy-to-use, graphical screens with no changes to the underlying enterprise applications.

For more information or to request a demo, visit:

<https://www.staylinked.com/panasonic>



### Loqus

Loqus Fleet Ltd specialises in the provision of end-to-end Transport management systems providing organisations with the necessary tools to help them Plan, Execute and Monitor & Control work orders from initial order taking down to the last mile. Headquartered in Malta, the group employs a passionate team of high calibre software engineers supported by an experienced management team

Visit website: <http://openfleet.loqusgroup.com/>



### Acronis

Acronis sets the standard for cyber protection and hybrid cloud storage through its innovative backup, anti-ransomware, disaster recovery, storage, and enterprise file sync and share solutions. Enhanced by its award-winning AI-based active protection technology, blockchain-based authentication and unique hybrid-cloud architecture, Acronis protects all data in any environment – including physical, virtual, cloud, mobile workloads and applications – all at a low and predictable cost.

Visit website: <https://www.acronis.com>



### GPC Systems

GPC is an award-winning software house with over 25 years of experience working with a range of sectors across the globe. Driven by the needs of their customers in healthcare, transportation, police, logistics and local government, GPC strives to improve outcomes through the most efficient use of resources. GPC has in-depth experience creating solutions utilising 3D cameras, including the Intel® RealSense™ technology integrated into the TOUGHBOOK M1.

Visit website: <https://www.gpcsl.com/>

*All technical specifications are subject to change without notice.*



## ACCESSORY SUMMARY 1

Solution Type	Part Number	Description
Power Management	FZ-VZSUT10U	Slim Battery Pack (3200 mAh) – 1 pc
	FZ-VZSUT11U	Extended Battery Pack (5580 mAh) – 1 pc
	FZ-VCBT131*	5-Bay Battery Charger
	FZ-AAE184E1*	USB Charger Kit (AC Adapter + USB Cable)
	CF-AA5713A*	AC Adaptor 5-Bay Cradle
	PCPE-LNDL122	5V Auto Adaptor for FZ-S1 (10W)
Carrying Solutions		
	FZ-VNSS11U	TOUGHBOOK S1 Shoulder Case
	FZ-VSTS11U	TOUGHBOOK S1 Hand Strap (rotatable)
Docking Solutions	FZ-VEH1L1AA*	TOUGHBOOK S1 Single Device Desktop Cradle
	FZ-VEH5L1AA*	TOUGHBOOK S1 5-Bay Desktop Cradle - Charge and LAN
	FZ-VCH5L1AA*	TOUGHBOOK S1 5-Bay Desktop Cradle - Charge ONLY
	PCPE-GJL1VM01/02/03	TOUGHBOOK S1 Gamber Johnson Vehicle Dock
	PCPE-HAVS101/02/03	TOUGHBOOK S1 Havis Vehicle Dock
Styluses	CF-VNP025U	Panasonic Thin Nib Passive Pen
	FZ-VNTT11U	Panasonic Stylus Tether (Qty 3)
	PCPE-INFUVA2	Toughmate Stylus Tether
Protection & Security	CF-VNC001W	Cleaning Cloth for LCD
	FZ-VPFL11U	Shatterproof Protective LCD film
Mobile Printing Solutions	PCPE-BRPJ763	PJ763 A4 mobile printer, 300 dpi with USB & Bluetooth
	PCPE-BRPJ773	PJ773 A4 mobile printer, 300 dpi with USB, WiFi and AirPrint
Productivity	PCPE-MOdBTH1	Bluetooth Headset
	PCPE-MOD10BC	Bluetooth Headset 10 Bay Charger
	PCPE-MOdBAT1	Bluetooth Headset Replaceable Batteries – 25 pack
	FZ-WHPX111	Panasonic Headset
Barcode Scanner Solutions	PCPE-PGLSCN1	Standard Range Barcode Scanner
	PCPE-PGLSCN2	Mid Range Barcode Scanner
	PCPE-PCGCHR3	Barcode Scanner Charging Cradle
	PCPE-PGLIT* SL/ML/LL	Index Trigger Glove – 3 Pcs. Pack (SL: Left Hand Small Size, ML: Left Hand Medium Size, LL: Left Hand Large Size)
	PCPE-PGLIT* SR/MR/LR	Index Trigger Glove – 3 Pcs. Pack (SR: Right Hand Small Size, MR: Right Hand Medium Size, LR: Right Hand Large Size)

All technical specifications are subject to change without notice.

## ACCESSORY SUMMARY 2

Solution Type	Part Number	Description
Professional Services	PCPE-PSANDRD	Android Installation
	PCPE-PSSIMIN	SIM Installation
	PCPE-PSATAG1	Asset Tagging
	PCPE-PSATAGB	Information Management Bundle
	PCPE-PSSPACK	Solution Packaging
	PCPE-PSLOGOB	Customer Branding
	PCPE-PSCDL01	Customised Deployment / Logistics
COMPASS	FZ-YCZDCOMP* 2U/4U/6U	COMPASS Complete
	FZ-YCZDCOMP* 8U/AU/CU	Smart COMPASS Complete
Lifecycle support solutions	HH-LESPEW* 4/5	Extended Warranty
	HH-LESPAD* 3/4/5	Accidental Damage Warranty
	CF-LESPBASS* 3/4/5	Smart Battery Warranty

Panasonic and TOUGHBOOK are brand names and registered trademarks of Panasonic Corporation. Microsoft® and Windows® are registered trademarks of Microsoft® Corporation of the United States and/or other countries. All rights reserved. Google, Android and other marks are trademarks of Google Inc. All rights reserved. All other brand names shown are the registered trademarks of the relevant companies.

Computer Product Solutions (CPS) BU, Panasonic System Communications Company Europe (PSCEU), Panasonic Marketing Europe GmbH, Hagenauer Straße 43, D-65203 Wiesbaden (Germany).