

# Panapod

*Elevation Unit for PTZ Cameras*





# Panapod

---

Panapod is a telescopic column that can be remotely operated from Panasonic control panels. It is an excellent elevation system for Panasonic PTZ cameras. It does not require any PC or software.

The unit can be used as a standalone system on a stage, in a studio, behind a goal, conference venue, or remote location such as a golf course to provide an unobtrusive camera position - great for the spectators whilst not interfering with the artists, players action, presenters or the sequence being shot.

Panapod is packed in just one case with protective foam inserts enabling great visibility and easy access of components for fast build and breakdown. Panapod can be installed in few minutes.

Many accessories are available, offering many possibilities in terms of mobility and camera mounts. Panapod is selectable in black or white color, matching the Panasonic PTZ camera on top.

## One Leg System

Model No: **PLC-PPU**  
-K or -W for Colour

- Payload = 35kg
- Max height = 1.5m
- Ideal for stages, conferences and demonstrations where extra height and manoeuvring is required
- Soft start and stop
- It can be controlled from Panasonic AW-RP panels
- Includes foot pedals and desktop control, for additional ways of control
- Includes Power Supply for 24V DC operation

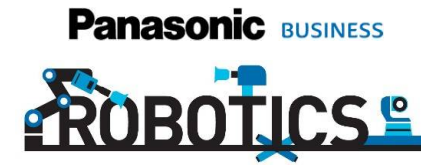


PLC-PPU-K  
*PanaPod Unit (Black)*  
*Includes case for two legs*

## Two Leg System

Model No: **PLC-ELK**  
**-K** or **-W** for Colour

- Approx. Payload = 25kg
- Max height = 3m
- Ideal for remote live shows, large conferences and hard to reach areas with PTZ's extra height / manoeuvring is required
- An example use case would be for a live event at the back of a room or a conference where height is needed
- For demonstrations, 3m can simulate the idea of a mounted PTZ in a room without having to actually mount – saving time and cost



PLC-ELK-K

*Additional Elevation Unit (Black)*

*(It can be stored in the case that comes included with PLC-PPU)*

PLC-PPU-K

*PanaPod Unit (Black)*

*Includes case for two legs*

## T-Bar Mounting

Model No: PLC-TBAR  
-K or -W for Colour

- 3 camera mounts, that can be moved along the bar
- Mounts can also be set upside down
- Ideal for multicamera shooting, when the space is limited
- It can be used with one-leg and two-leg systems
- It can be stored in the same case that comes included with PLC-PPU



PLC-TBAR-K  
"T" Bar with 3 Camera Mounts (Black)



Panasonic BUSINESS

ROBOTICS



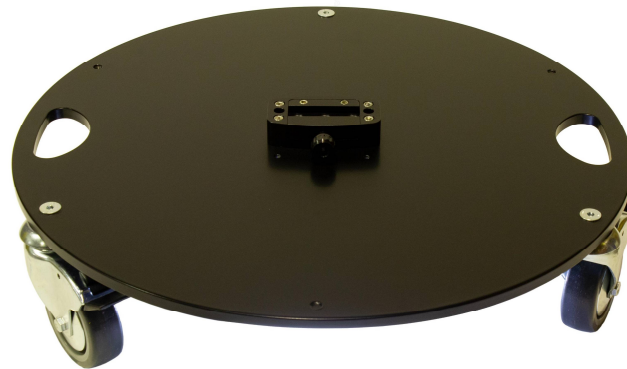
# Out of the Box

1 or 2 leg system  
(camcorder mount optional, levelling bowl & cheese plate as standard)

**Heavy Duty Dolly**  
PLC-FWLB (K or W for Colour)



**Heavy Duty 30kg Baseplate**  
PLC-WLD (K or W for Colour)



**T-Bar with 3 PTZ Mounts**  
PLC-TBAR (K or W for Colour)

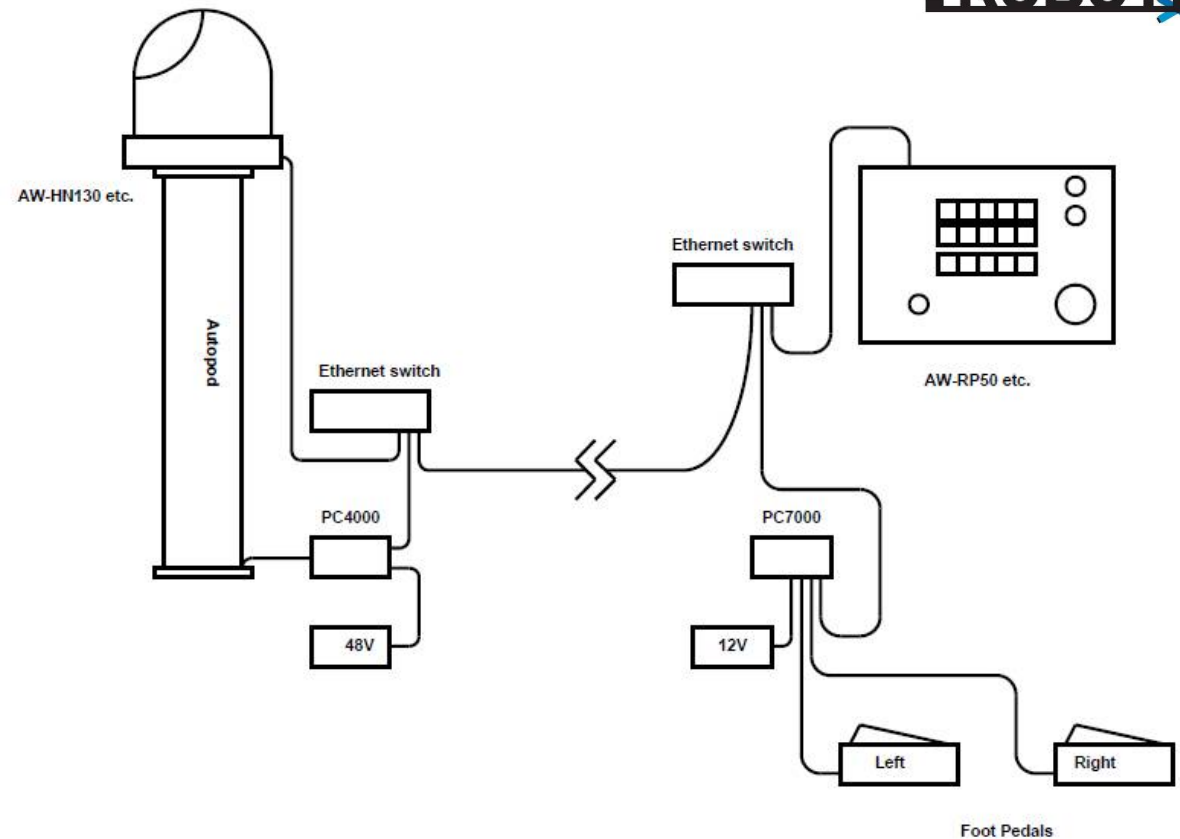


## Optional Accessories

To suit different events, payload as well as movement of the cameras for quick fly away set-up

# System Configuration

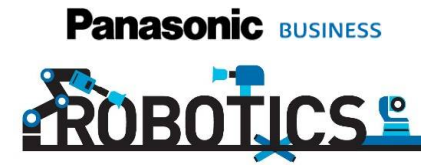
- Controllable from Panasonic remote control panels (AW-RP50/RP120/RP150/RP60)
- Both via Serial and via IP
- Panapod is selected as any other PTZ camera in the RP panel, and elevation can be controlled with the joystick
- Presets can be stored and recall as any other PTZ camera. Recall speed can be control with Iris dial.
- Show mode: programmed preset that moves the unit up and down with a pause on top and at the bottom.
- Foot pedals can be used in combination with the Panasonic AW-RP panel, in order to control all axis simultaneously (PTZF and elevation)







# Presets



## Panasonic Preset Functions:

1-14: Height Presets for User

15: Show Mode. Panapod moves up & down at 1/3 speed. 30" wait at top & bottom

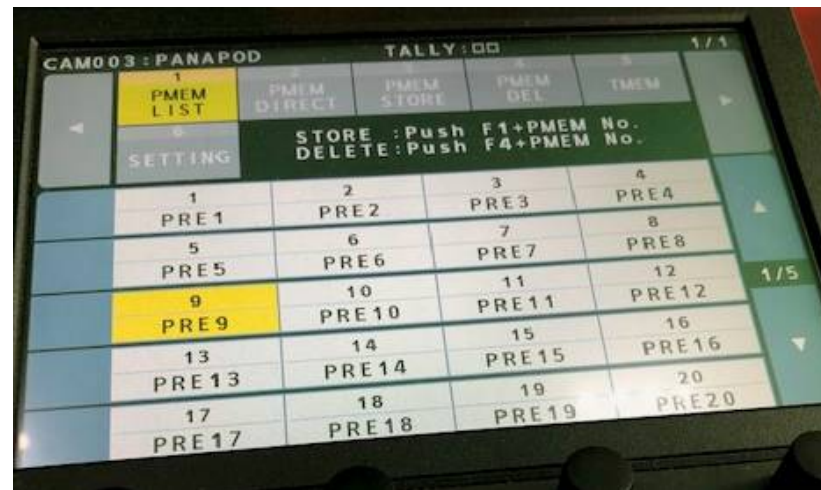
16: Stop Show Mode. This can also be achieved by foot pedal or by using the joystick in the RP panel

17: Show Mode. Panapod moves up & down at 1/3 speed. 45" wait at top & bottom

18: Show Mode. Panapod moves up & down at 1/3 speed. 60" wait at top & bottom

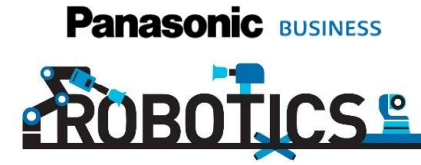
19: Perform Calibration: it calibrates one or two legs.

20: Store position (Panapod moves down to bottom, so that it can be stored in the case)





# Commercial References



## KITS

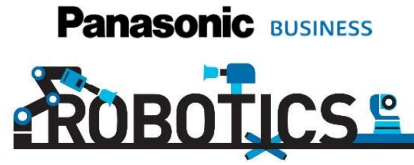
- PLC-PPU/ELK-K (-W): PanaPod Unit + Additional Elevation Kit, Black (-W for White)
- PLC-PPU/TBAR-K (-W): PanaPod Unit + "T" Bar with 3 Camera Mounts, Black (-W for White)
- PLC-PPU/ELK/TBAR-K (-W): PanaPod Unit + Additional Elevation Kit + "T" Bar with 3 Camera Mounts, Black (-W for White)

## WARRANTY

- Standard warranty for Panapod is 2 years.
- Optional 3-year warranty extension can be purchased:
  - PLC-PPU-3YWV: 3 year warranty extension for PanaPod (total 5 years)



# Specifications



---

<b>Model</b>	Panapod (PLC-PPU)
<b>Payload</b>	35Kg (1-leg system), 25Kg (2-leg system)
<b>Weight</b>	10Kg (without accessories)
<b>Standard stroke length</b>	675mm - providing extended height to 1235mm
<b>Stages</b>	3
<b>Speed</b>	Up to 43mm/s (16s from top to bottom or vice versa)
<b>Power input</b>	AC adaptor is included, 110-240V AC
<b>Connections</b>	<ul style="list-style-type: none"><li>- Selectable LAN or Serial RJ45</li><li>- Desktop controller: IP or Serial connection</li><li>- Foot Pedal Control (up &amp; down): it can be connected to the elevation unit (2m standard serial cable) or to the desktop controller via IP</li></ul>
<b>Accessories</b>	<ul style="list-style-type: none"><li>AC adaptor</li><li>Desktop controller</li><li>Foot pedals (up &amp; down)</li><li>Cross "X" base</li><li>Power and connecting cables</li></ul>

---